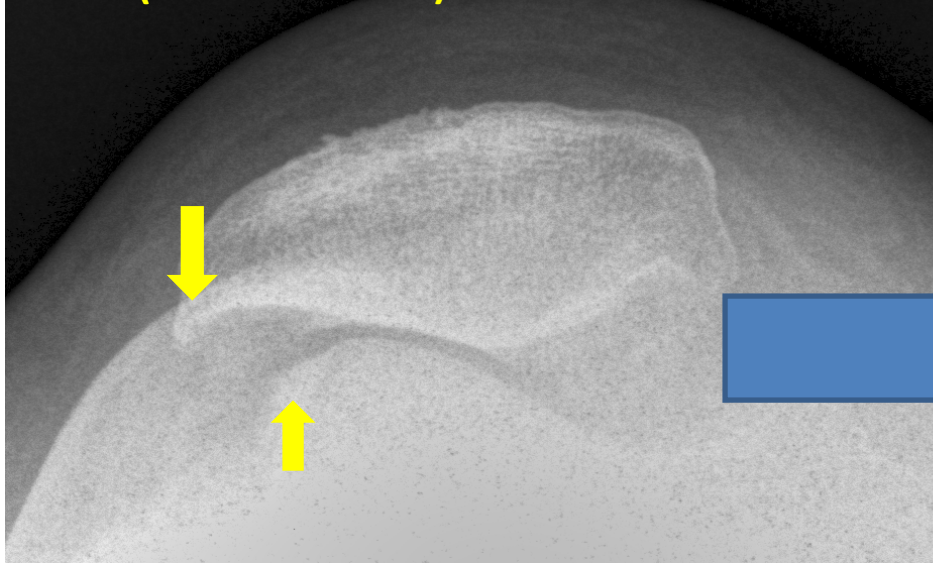


Patellofemoral Inlay Resurfacing

A painful knee-cap joint can limit all activities, including: arising from a seated position, sitting with knees bent, kneeling, going up and down stairs and inclines, and all sports. In this case the Arthrosurface Patellofemoral XLT implants were used to resurface this highly arthritic joint.

**Before, patella malaligned
(shifted to side) and “bone on bone”**



**After, resurfaced and
correctly aligned**

